

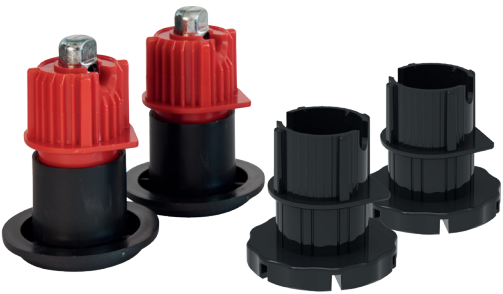
437 □ **P4 00 55** **F0**

05
06
07
Hcm

OPTIONAL

REAR
ART. 437

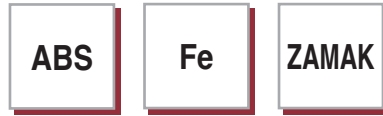
FRONT
ART. 455



2 x

2 x

1 x

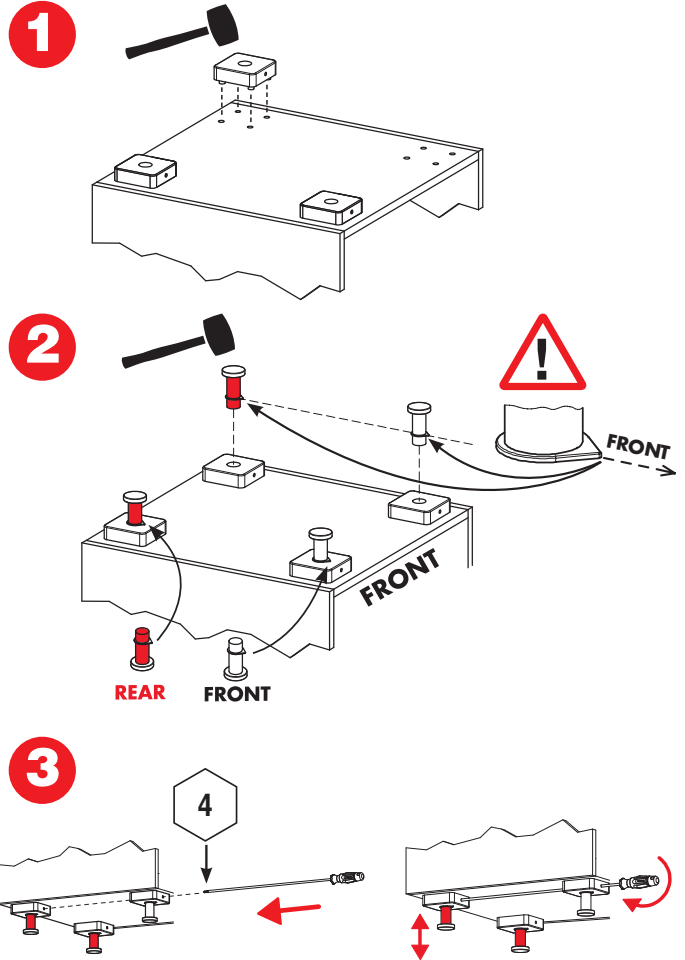


New

50

1200

100



9 **4** 809 68 C1 04 00 641

9 **203** **228** **235**
 601 611 614
H 7 H 7 H 5-7

9 **226 00 24 AL P2** 608
226 00 N2 00 00 607
H 7

226 10 24 AL P2 608
230 00 02 MA DE 612
H 5-7

226 15 24 AL P2 609
226 13 N2 00 00 609
H 6-7

2 **CAMAR ERCOLINO SYSTEM** 22 mm

840 00 P2 H2 16 75
840 00 P2 H2 20 76
840 00 P2 H2 A6 74
840 00 P2 J2 RF 77
840 00 P2 J6 RF 78
840 00 P2 M4 RF 79
840 00 P2 M6 RF 80
840 00 P2 XA RF 81
840 00 P2 X3 RF 82
840 00 P2 X7 RF 83

9 **809** □ **Z1 M8 00** 638