

819 AS E1 D1



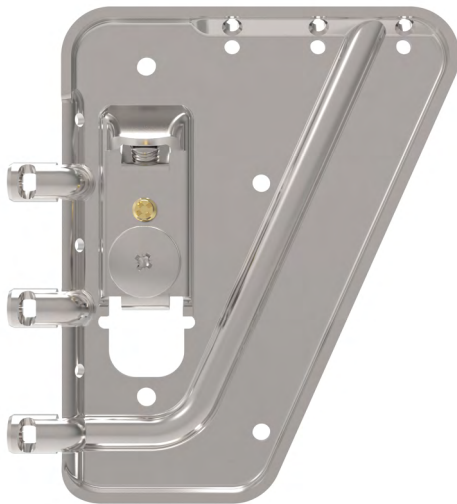
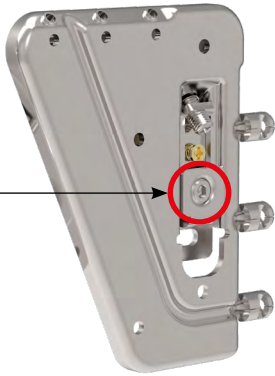
DX
SX



FOR YOUR SAFETY WARNING

www.camar.it/warning

New



3D 8mm 8mm 4 Fe



50 1500 100

1 **2**

3a

3b

Screw the golden bolt in to its limit point.
 Avvitare fino a fine corsa.

3c

After assembly, verify that the anti-drop system has been activated.
 Verificare dopo il montaggio l'avvenuta attivazione del sistema antigancio.

9 **BRACKET** **PLATE** **BP** 16mm **897 AS Z1 12 86 V2** 696

9 **810 B2** **45 12** 643

9 **810 B4** **45 12** 643

9 **810 P0** **45 12** 644