

821 15 Z1 IN UP

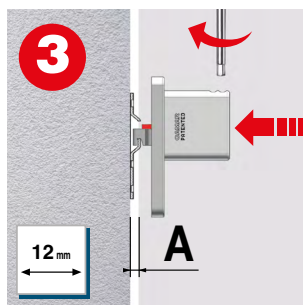
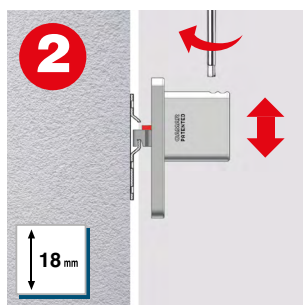
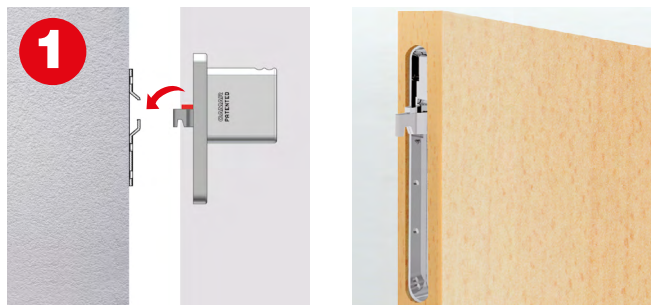
3



FOR YOUR SAFETY WARNING

www.camar.it/warning

3D 	12 mm 	18 mm 	3 mm 	4
	Fe	ZAMAK		
50	1800	100		



A = 9-12 mm

A = 0-9 mm

3D After assembly, verify that the anti-drop system has been activated.

3D Verificare dopo il montaggio l'avvenuta attivazione del sistema antisgancio.

1 **306**
 40-43

9 **810 15 □ 06 08** 652

9 **895 AS Z1 12 UP** 688

9 **4** **809**
 638-641